



MF-9087

September 2001

epsilon™ LC Quick Start Guide

Bioanalytical Systems, Inc.
2701 Kent Avenue
West Lafayette, IN 47906 USA

www.bioanalytical.com
www.epsilon-web.net
Phone: 765-463-4527

Thank you for purchasing the epsilon LC detector. Your new BAS instrument will provide years of service for your chromatography requirements. The epsilon detector was fully tested electronically before shipping. If you purchased a complete LC system, it was wet-tested as well.

Please follow the procedures below when setting up your instrument. Note that **a complete electronic manual will be installed on your computer** along with the operating software (ChromGraph Control and ChromGraph Report). We strongly recommend that you read the manual before operating your epsilon detector.

Software Installation

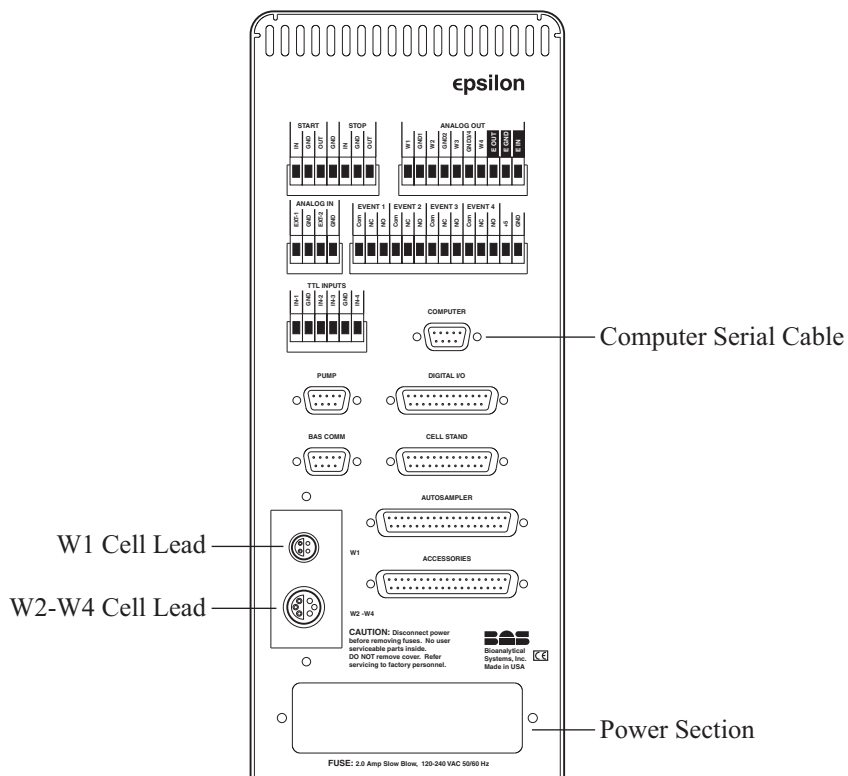
ChromGraph software will run on almost any modern computer. The minimum specifications call for a Pentium®-class CPU with a 166 MHz clock speed. There should be at least 32 MB RAM and the operating system should be Windows 95 or most newer version of Windows.

ChromGraph comes as two sister programs, ChromGraph Control and ChromGraph Report. Control sets the instrument parameters and oversees the collection and storage of data. Report processes the data after it has been collected.

NOTE: If you purchased ChromGraph in a package that included a computer, your software will already be installed. If you are providing your own computer, use the installation CD as follows:

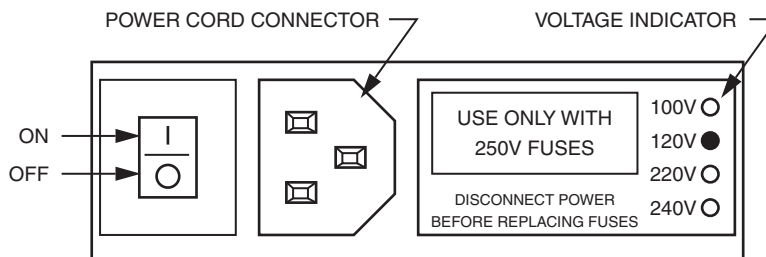
1. Insert the ChromGraph CD in your CD-ROM drive. Double-click the 'My Computer' icon on the desktop, then double-click the CD-ROM icon (usually drive D:).
2. There will be several setup icons for different operating systems, typically Windows9x/ME, Windows NT, and Windows 2000 (note: if you can't read the full description of these icons, change the folder's view option to 'details' by selecting 'View' and 'Details' at the top of the folder).
3. Double-click the appropriate icon to start the installation.
4. Accept all the default installation options as they are presented to you.
5. Shortcuts to the BAS programs (Control and Report), and to the electronic manual (LCmanual) will be installed to the Start Menu under Programs/ChromGraph, and to the Windows desktop.
6. Depending on the operating system, you may be asked to restart your computer after the installation. You need not restart immediately, but must do so before running ChromGraph Control.
7. If you ever wish to uninstall ChromGraph Software, follow instructions 1-3 above. You will reach a 'Remove' option, which will uninstall ChromGraph completely from your system.

Diagram of Epsilon Back Panel



Power

The epsilon system requires a 3-prong grounded power supply, providing either 120 or 240 V at 50/60 Hz. Before connecting the power cord, check that the indicator next to the power connection shows the correct voltage.



If the indicator does not show the correct voltage, consult the Hardware Installation section of the electronic manual.

Computer Connection

Connect a standard 9-pin, RS-232 serial cable (BAS Communications, P/N ER-9534) between any COMM port on the computer and the COMPUTER port on the epsilon detector:

Electrochemical Detector Leads

WARNING: NEVER CONNECT THE CELL LEADS WHEN THE EPSILON SYSTEM IS TURNED ON, AND NEVER TOUCH THE EXPOSED PINS OF THE CELL LEADS WHEN THE INSTRUMENT IS ON. DOING SO COULD DAMAGE THE SENSITIVE AMPLIFIERS AND VOID YOUR WARRANTY.

Connect the specialty LEMO connectors of the cell leads to the connectors labeled W1 Cell Lead and W2-W4 Cell Lead. Note that the W1 cell lead has the smaller connector. If your instrument is multi-channel there also will be a lead for the larger W2-W4 connector. The connectors must be oriented so their half-moon inserts mate with those in the sockets. Connection of the other ends of these leads to the electrodes is described in the Flowcell Installation section of the electronic manual.

Other Connections

Connections to other equipment (pump, autosampler, external detectors) are also provided and used as needed. Please see the relevant sections in the electronic manual.

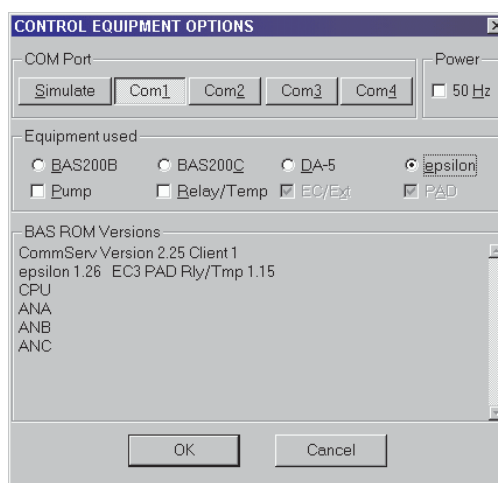
Starting ChromGraph Control Software

Before starting the system, make sure your epsilon chromatograph and its software have been installed as specified. For greater detail consult the electronic manual. All peripheral equipment such as pump, external detectors, heaters, etc. should be turned on and connected as appropriate. Allow the instruments to complete their self checks before starting ChromGraph Control software.

Start ChromGraph Control with either a desktop shortcut icon or the Windows Start Menu/Programs/ChromGraph/Control.

One of two things will happen at this point. If everything is connected properly, a picture of a chromatograph will appear. But if the computer cable is plugged into the wrong communications port, or is unplugged, the EQUIPMENT OPTIONS box will appear.

To get to the options box if it does not come up, go to Data Menu/EQUIPMENT OPTIONS.



The following sections should be filled out:

COM Port: Com1, Com2, Com3, or Com4 should be depressed, depending on which port you've used when connecting the epsilon system to the computer.

Power: Unchecked = 60 Hz (USA). Checked = 50 Hz.

Equipment Used: Click the epsilon radio button.

Press the OK button next. The Equipment Options screen should come back with entries in the 'BAS ROM Versions' section, indicating that the software is communicating with the epsilon system. Press OK again and this screen will be replaced by a picture of a chromatograph.